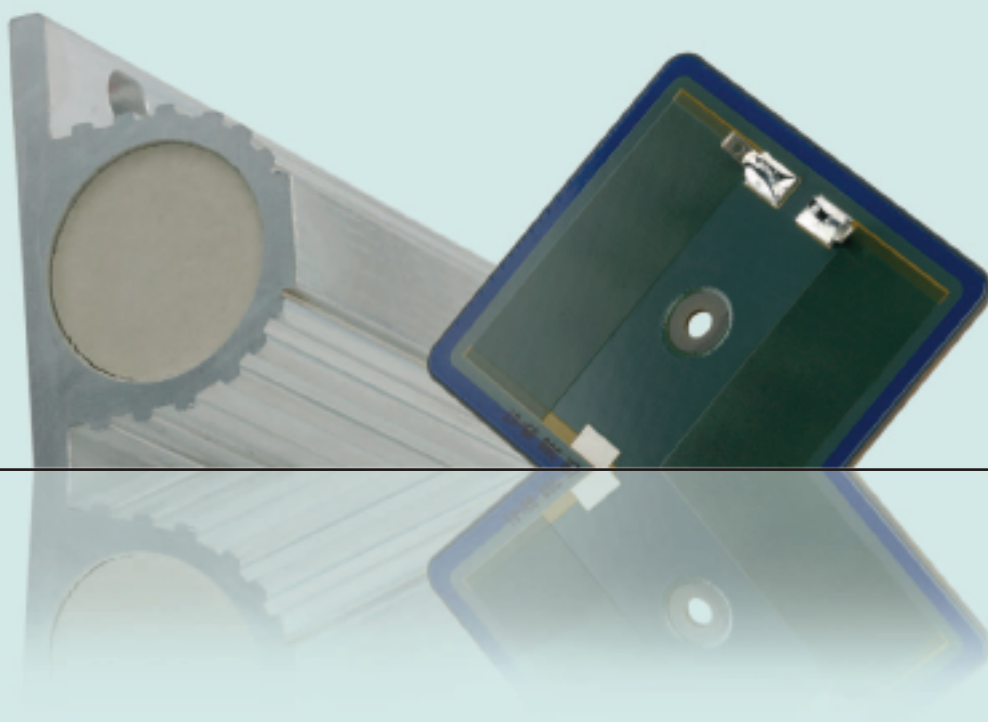


Product overview

Power resistors

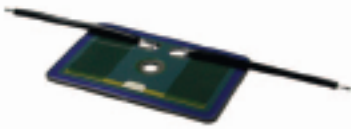



metallux.de


technology matters


02/09 · EN


Metallux AG
Robert-Bosch-Straße 29
D-71397 Leutenbach-Nellmersbach
Germany
.Telefon 00 49 (0) 7195 / 59 80 - 0
.Telefax 00 49 (0) 7195 / 59 80 - 300
E-Mail: info@metallux.de
<http://www.metallux.de>


| Type | Metallux type | dimensions mm | resistance values Ohm | nominal load W at 25°C | supply voltage VAC | testing voltage KV | max. pulseload KW | max. weight g |
|--|--|---------------|-----------------------|------------------------|--------------------|--------------------|-------------------|---------------|
| PLR Thickfilm on steel | | | | | | | | |
|  | 100.61.41 | 61 x 41 x 1 | 3 – 10k Ohm | 100 | 1000 | 2,5 | 1,6 | 10 |
| | 100.55.43 | 55 x 43 x 1 | 3 – 10k Ohm | 100 | 1000 | 2,5 | 1,45 | 10 |
| | 180.145.200 | 145 x 20 x 1 | 3 – 10k Ohm | 180 | 1000 | 2,5 | 1,8 | 15 |
| | 300.70.61 | 70 x 61 x 1 | 3 – 10k Ohm | 300 | 1000 | 2,5 | 2,3 | 20 |
| | 900.188.75 | 188 x 75 x 1 | 3 – 10k Ohm | 900 | 1000 | 2,5 | 2,9 | 60 |
| | special features: low inductiv, RoHS compliant, steel substrate 1.4016, IP00 | | | | | | | |

| Type | Metallux type | dimensions mm | resistance values Ohm | nominal load W at 25°C | supply voltage VAC | testing voltage KV | max. pulseload KW | max. weight g |
|--|---|---------------|-----------------------|------------------------|--------------------|--------------------|-------------------|---------------|
| PWR-S Wire wound | | | | | | | | |
|  | S 45 | 55 x 30 x 16 | 1 – 65k Ohm | 45 | 400 | 4 | 0,4 | 35 |
| | S 60 | 77 x 30 x 16 | 1,5 – 110k Ohm | 60 | 600 | 4 | 0,6 | 52 |
| | S 90 | 104 x 30 x 16 | 2,2 – 160k Ohm | 90 | 700 | 4 | 0,8 | 73 |
| | S 100 | 120 x 30 x 16 | 2 – 180k Ohm | 100 | 700 | 4 | 0,9 | 86 |
| | S 125 | 165 x 30 x 16 | 3 – 220k Ohm | 125 | 800 | 4 | 1,0 | 115 |
| | S 150 | 180 x 30 x 16 | 3,3 – 300k Ohm | 150 | 1000 | 4 | 1,3 | 120 |
| | special features: UL 100 to 150 W, RoHS compliant, IP55 | | | | | | | |

| Type | Metallux type | dimensions mm | resistance values Ohm | nominal load W at 25°C | supply voltage VAC | testing voltage KV | max. pulseload KW | max. weight g |
|--|---|---------------|-----------------------|------------------------|--------------------|--------------------|-------------------|---------------|
| PWR-R Wire wound | | | | | | | | |
|  | R 150 | 90 x 37 x 28 | 1,6 – 180 Ohm | 150 | 1000 | 4 | 1,5 | 180 |
| | R 200 | 105 x 37 x 28 | 2,2 – 240 Ohm | 200 | 1000 | 4 | 2,0 | 208 |
| | R 300 | 155 x 37 x 28 | 4,7 – 430 Ohm | 300 | 1500 | 4 | 3,0 | 310 |
| | R 400 | 200 x 37 x 28 | 6,8 – 620 Ohm | 400 | 2000 | 4 | 4,0 | 400 |
| | R 500 | 260 x 37 x 28 | 9,1 – 910 Ohm | 500 | 2300 | 4 | 5,0 | 515 |
| | R 600 | 320 x 37 x 28 | 12 – 1,2k Ohm | 600 | 2800 | 4 | 6,0 | 63 |
| | special features: UL to 500W, temperature switch intern, RoHS compliant, IP55 | | | | | | | |


| Type | Metallux type | dimensions mm | resistance values Ohm | nominal load W at 25°C | supply voltage VAC | testing voltage KV | max. pulseload KW | max. weight g |
|--|--|---------------|-----------------------|------------------------|--------------------|--------------------|-------------------|---------------|
| PWR-O Wire wound | | | | | | | | |
|  | O 150 | 72 x 56 x 30 | 1,6 – 180 Ohm | 150 | 1000 | 4 | 1,5 | 195 |
| | O 200 | 87 x 56 x 30 | 2,2 – 240 Ohm | 200 | 1000 | 4 | 2,0 | 235 |
| | O 300 | 137 x 56 x 30 | 4,7 – 430 Ohm | 300 | 1500 | 4 | 3,0 | 325 |
| | O 400 | 182 x 56 x 30 | 6,8 – 620 Ohm | 400 | 2000 | 4 | 4,0 | 415 |
| | O 500 | 242 x 56 x 30 | 9,1 – 910 Ohm | 500 | 2300 | 4 | 5,0 | 530 |
| | O 600 | 302 x 56 x 30 | 12 – 1,2k Ohm | 600 | 2800 | 4 | 6,0 | 670 |
| | special features: UL to 500W, temperature switch intern, RoHS compliant, ext. ceramic terminal optional, IP 55 | | | | | | | |

| Type | Metallux type | dimensions mm | resistance-value Ohm | nominal load W at 25°C | supply voltage VAC | testing voltage KV | max. pulseload KW | max. weight g |
|--|--|---|--|--|--|----------------------------|--|--|
| PWR-F Wire wound | | | | | | | | |
|  | F 150 F 200 F 300 F 400 F 500 F 600 | 80 x 79 x 19 110 x 79 x 19 163 x 79 x 19 216 x 79 x 19 270 x 79 x 19 300 x 79 x 19 | 2,2 – 220 Ohm 3,6 – 390 Ohm 5,6 – 560 Ohm 7,5 – 820 Ohm 10 – 1k Ohm 11 – 1,1k Ohm | 150 200 300 400 500 600 | 1000 1000 1500 1500 2000 2000 | 4 4 4 4 4 4 | 1,5 2,0 3,0 4,0 5,0 6,0 | 250 350 500 650 800 900 |
| special features: RoHS compliant, IP 55 | | | | | | | | |


| | | | | | | | | |
|--|---------------------|--------------------------------|----------------------------|------------|--------------|------------|------------|------------|
| PWR-RFI Wire wound | | | | | | | | |
|  | RFI 600 RFI 1300 | 100 x 57 x 12 202 x 57 x 12 | 4 – 150 Ohm 8 – 430 Ohm | 170 320 | 1000 2500 | 2,5 2,5 | 1,5 3,0 | 200 400 |
| special features: SS body, RoHS compliant, IP33 | | | | | | | | |

| | | | | | | | | |
|---|----------------------|----------------------------------|------------------------------|--------------|------------|--------|-------------|--------------|
| PWR-GR Resistor assembly | | | | | | | | |
|  | 2 GR 600 4 GR 600 | 460 x 165 x 57 460 x 165 x 72 | 4 – 3k Ohm 8,2 – 1,5k Ohm | 1200 2400 | 600 600 | 4 4 | 6,0 12,0 | 2600 3900 |
| special features: module IP55, FIBOX terminal box opt., temperature switch, variably combinable, CE | | | | | | | | |


| | | | | | | | | |
|--|--|--|--|----------------------------|--------------------------|------------------|--------------------|------------------------------|
| PWR-GF Resistor assembly | | | | | | | | |
|  | 2 GF 500 2 GF 600 4 GF 500 4 GF 600 | 460 x 165 x 90 460 x 165 x 90 460 x 165 x 90 460 x 165 x 90 | 5 – 2k Ohm 5,6 – 2,2k Ohm 2,7 – 3,9k Ohm 2,7 – 4,3k Ohm | 500 600 1000 1200 | 600 600 600 600 | 4 4 4 4 | 8 9 16 18 | 2900 3100 4500 4900 |
| special features: module IP55, terminal box opt. , temperature switch, variably combinable, CE | | | | | | | | |

| Type | Metallux type | dimensions mm | resistance-values Ohm | nominal load W at 25°C | supply-voltage VAC | testing voltage KV | max. pulse load KW | max. weight g |
|--|---------------|-----------------|-----------------------|------------------------|--------------------|--------------------|--------------------|---------------|
| PWR-XTR Brakeresistor | | | | | | | | |
|  | 1TR 30... | 435 x 94 x 105 | 5 – 100 Ohm | 400 – 750 | 600 | 1,5 | 10 | 4200 |
| | 2TR 30... | 435 x 166 x 105 | 5 – 100 Ohm | 800 – 1500 | 600 | 1,5 | 20 | 6800 |
| | 4TR 30... | 435 x 166 x 177 | 5 – 100 Ohm | 1600 – 2000 | 600 | 1,5 | 40 | 5200 |
| | 6TR 30... | 435 x 238 x 177 | 5 – 100 Ohm | 3000 | 600 | 1,5 | 60 | 7100 |
| | 1TR 320S | 790 x 170 x 120 | 5 – 100 Ohm | 2000 | 600 | 1,5 | 40 | 5500 |
| | 2TR 320S | 825 x 185 x 250 | 5 – 100 Ohm | 5000 | 600 | 1,5 | 80 | 11000 |

PWR-TR
Wire wound tube resistor

| | | | | | | | | |
|--|----------|-------------|----------------|----------|------|-----|------|-----|
|  | TR 27... | ∅ 4,3 x 5,8 | 0,1 – 5,6k Ohm | 1 – 4 | 500 | 0,5 | 0,02 | 2 |
| | TR 27... | ∅ 9,5 x 12 | 0,2 – 22k Ohm | 7 – 15 | 500 | 0,5 | 0,06 | 16 |
| | TR 26... | ∅ 17 | 4 – 22k Ohm | 20 – 40 | 1500 | 1,5 | 0,2 | 51 |
| | TR 26... | ∅ 24 | 1 – 39k Ohm | 30 – 100 | 2000 | 2 | 0,8 | 110 |
| accessories: mounting bracket | | | | | | | | |

PWR-TR
Wire wound tube resistor

| | | | | | | | | |
|--|----------|------|----------------|------------|-------------|---|-----|------|
|  | TR 30... | ∅ 35 | 1 – 120k Ohm | 75 – 200 | 1200 – 2500 | 3 | 1,6 | 400 |
| | TR 30... | ∅ 47 | 1,8 – 200k Ohm | 200 – 500 | 2000 – 3000 | 4 | 4 | 700 |
| | TR 30... | ∅ 68 | 5,6 – 180k Ohm | 750 – 1300 | 4000 – 4500 | 4 | 8 | 3500 |
| accessories: mounting bracket | | | | | | | | |

Metallux AG
Robert-Bosch-Straße 29
D-71397 Leutenbach-Nellmersbach
Germany
Telefon 00 49 (0) 7195 / 59 80 - 0
Telefax 00 49 (0) 7195 / 59 80 - 300
E-Mail: info@metallux.de
<http://www.metallux.de>