

## Potentiometer CP Model POL 200



### Features

- high life cycles
- excellent linearity

### Applications

- throttle position
- joysticks
- steering angle fork lift

# Potentiometer CP Model POL 200



metallux.de

technology matters

## Electrical Characteristics

Resistance range	1k $\Omega$ , 5k $\Omega$ , 10k $\Omega$	(1)
Resistance tolerance	$\pm 20\%$	(1)
Effective electrical angle	320°	
Independent linearity	$\pm 2\%$	(1)
Power rating	0,5 W at 70°C	
Resolution	essentially infinite	
Max. wiper current	50mA in failure mode	
Wiper load	> 100* R <sub>n</sub>	
Insulation resistance	10 G $\Omega$ at 500 VDC	
Dielectric withstanding voltage	1000 VAC	
Temperature coefficient at voltage divider	< $\pm 15$ ppm/°C	

## Mechanical Characteristics

Life cycles	3.000.000 cycles	
Mechanical angle	no mechanical end stop	(2)
Seal condition	IP 50	(1)
Torque (starting&running)	< 0,7Ncm	(1)
Bearing	solid bearing	

## Environmental Characteristics

Operating temperature	-25°C ... +85°C
Climatic class	25/085/56
Vibration	10g (50Hz - 10 kHz)
Shock	50g 11 msec half sine

## Material

Body mould	thermoplastic
Shaft	stainless steel
Terminals	gold plated

Specifications subject to change without notice

- (1) Other values on request  
(2) Stops on request

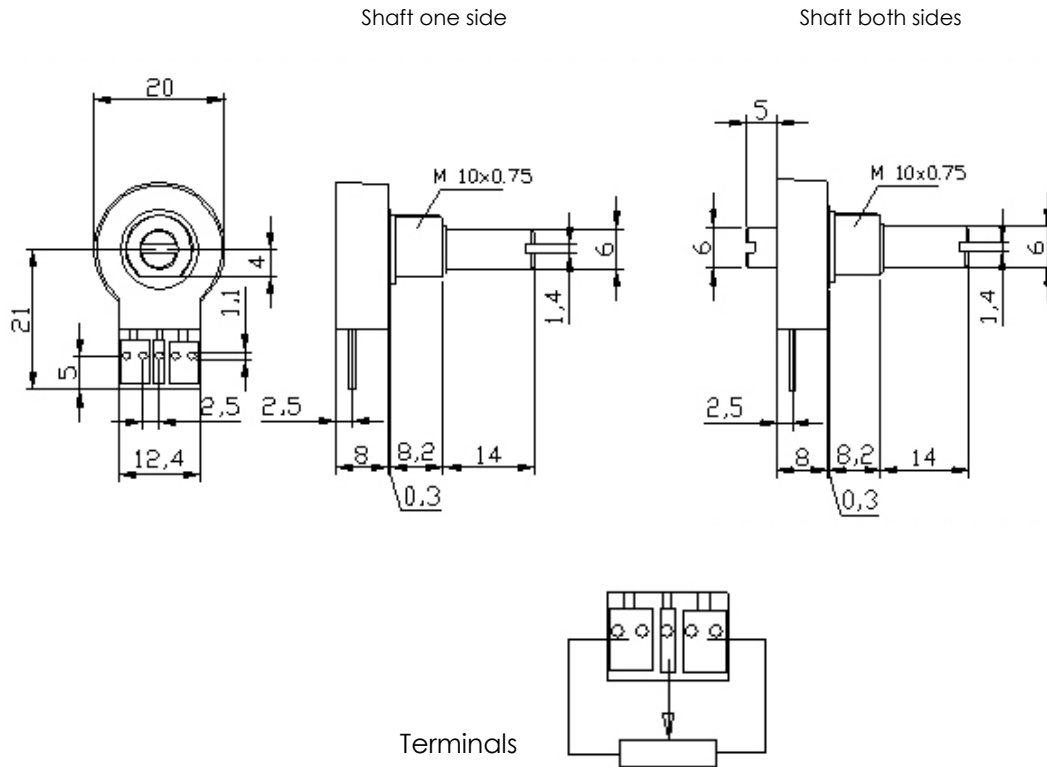
# Potentiometer CP Model POL 200



metallux.de

technology matters

## Drawing



## How to order

<b>P</b>	<b>O</b>	<b>L</b>	<b>2</b>	<b>0</b>	<b>0</b>	<b>M</b>	<b>A</b>	<b>G</b>	<b>L</b>	<b>E</b>	<b>1</b>	<b>0</b>	<b>K</b>	<b>3</b>	<b>2</b>	<b>0</b>	<b>°</b>	<b>L</b>	<b>i</b>
<b>Series</b> Potentiometer CP			<b>Type</b> Body diameter : 20mm			<b>Fixture</b> M - M 10 thread, Ø26mm axle with slot spindle length starting from threaded part 17mm		<b>spindle storage</b> GL - Solid bearing DU - Plastic socket <b>Spindle diameter</b> A - 6mm		<b>Resitance</b> 1K 5K 10K			<b>Electrical angle</b> 320°			<b>Possible connection</b> Li - Braid connection on plate KA - Cable connection			
<b>Notes:</b> E - Axle mechanically rev upable P - With torque stop pin at the body mould O - Without torque stop pin at the body mould V - Continuous axle																			

Specifications subject to change without notice