

Potentiometer CP Model POL 220



Features

- high life cycles
- excellent linearity

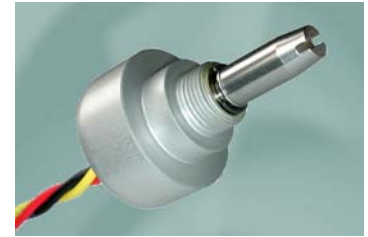
Applications

- valve control
- joysticks
- steering angle fork lift
- servosystems

Metallux AG

Robert-Bosch-Str. 29
D-71397 Leutenbach
Tel: +49 (0) 7195/5980-0
Fax +49 (0) 7195/5980-300
www.metallux.de
info@metallux.de

Potentiometer CP solid Model POL 220



metallux.de

technology matters

Electrical Characteristics

Resistance range	1k Ω , 5k Ω	(1)
Resistance tolerance	\pm 20%	(1)
Effektive electrical angle	320°	(1)
Independent linearity	\pm 1%	(1)
Power rating	0,5 W at 70°C	
Resolution	essentially infinite	
Max. wiper current	10mA in failure mode	
Wiper load	> 100* R _n	
Insulation resistance	10 G Ω at 500 VDC	
Dielectric withstanding voltage	1000 VAC	
Temperature coefficient at voltage divider	\pm 20 ppm/°C	

Mechanical Characteristics

Life cycles	10.000.000 cycles	
Mechanical angle	no mechanical end stop	(2)
Seal condition	IP 63 (op. IP 65)	(1)
Torque (starting & running)	< 0,3Ncm	(1)
Bearing	solid bearing	(1)

Environmental Characteristics

Operating temperature	-40°C ... +120°C
Climatic class	25/085/56
Vibration	10g (50Hz - 10 kHz)
Shock	50g 11 msec half sine

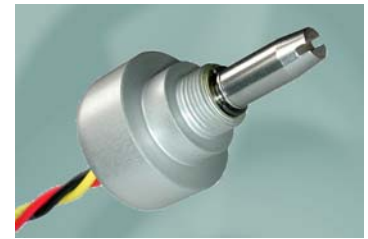
Material

Housing	aluminium anodised
Shaft	stainless steel
Terminals	gold plated

Specifications subject to change without notice

- (1) Other values on request
(2) Stops on request

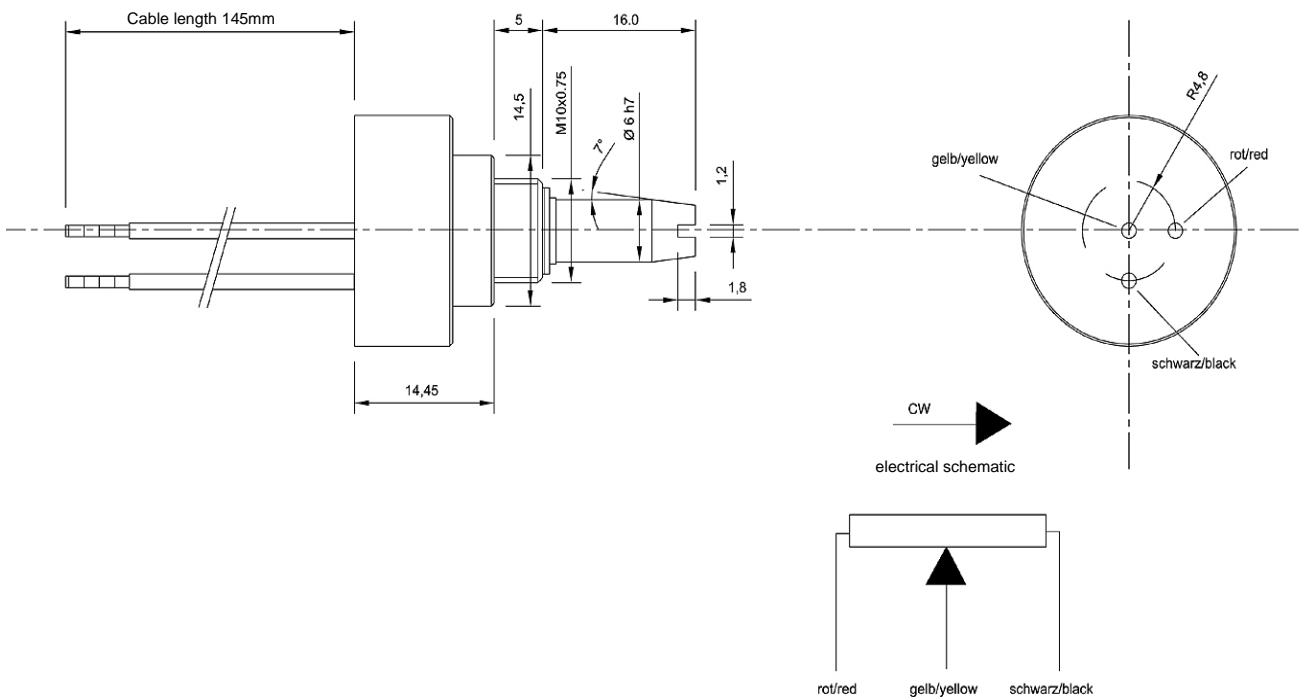
Potentiometer CP solid Model POL 220



metallux.de

technology matters

Drawing



How to order

P O L	2 2 0	N S	A G L	W	5 K	3 2 0 °	L i
Series Potentiometer CP	Type Body diameter : 22,22mm double potentiometer have the marking POL 222	Fixture thread: N - M10, Ø 6mm axle with slot and chamfers Spindle length starting from threaded part 15,7mm M - M10, Ø 6mm axle with slot Spindle length starting from threaded part 13,0mm U - 3/8 Zoll, Ø 6,35mm spindle diameter flange: S - Servoflange Ø 14,4 mm height 4,3mm Z - Special flange	Spindle storage GL - Solid bearing Spindle diameter A - 6,00mm B - 6,35mm	Resitance 1K 5K W - Notice with 320° E - Axle mechanically rev upable X - Anti-twist plate pin T - Linearized up to +/- 0,5%	Electrical angle 320° Further angles of rotation: 340° 2 x 40° Redundant versions for example: 2 x 320° Potentiometer with electrically isolated switches. Center tap possible	Possible terminals Li - Braid connection - poured PL - Print soldering irons FB - Flat cable KS - Plug	

Specifications subject to change without notice