

## DATA SHEET

### Power resistor (stainless steel)

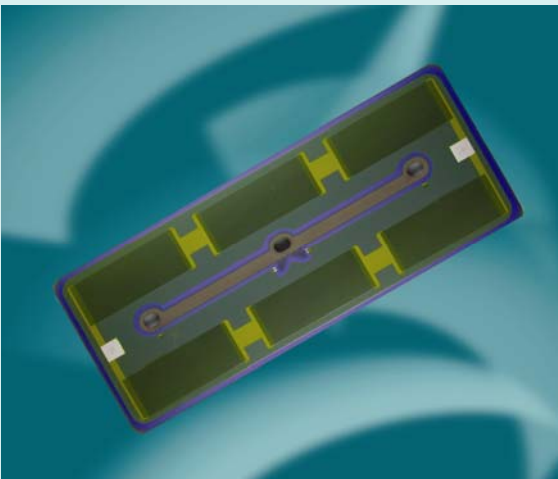
Model: PLR 900

#### Features

- high adiabatic impulse
- flat design
- low inductivity
- RoHs compliant

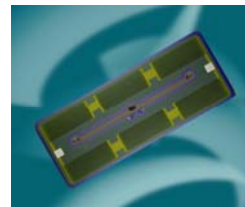
#### Applications

- brake resistor
- capacity discharge
- heating resistor
- snubber resistor



# DATA SHEET

## Power resistor (stainless steel) Model: PLR 900



metallux.de

technology matters

### Electrical Characteristics

Power Rating	120 W in air 900 W on heat sink with thermal resistance 0,5°C/W force cooled 5 m/sec	
Pulse Power	8 x P(nom) < 1s	
Resistor range	10 Ω ... 10 K Ω	(1)
Resistor tolerance	± 10% (5%)	(1)
Dielectric strength	2500 VAC, 1 min. bei 100°C, 75 relative humidity	
Peak Voltage	4 KV	
Max. operating voltage	1000 V	
Operating temperature	- 55°C ... + 200 °C	
Insulation Resistance	1000 MΩ	
Encapsulation	glaze	
Temperature coefficient	± 100ppm/°C	
Max. surface temperature	350°C	
- in failure mode	Δ R>Rnom.	

### Mechanical Characteristics

Weight	108g
Protection class	IP 00

### Environmental Characteristics

Storage Temperature	- 40°C ... + 105 °C
---------------------	---------------------

### Electrical Terminals

Cable	PTFE cable	(2)
Terminals	AMP	(2)

### Applications Notes

If the PLR900 should operate under continuous power rating please use a heatsink with low thermal resistance. Forced air cooling is required to maintain the specific temperature limits. A thermal grease should be applied between the heatsink and the resistor.

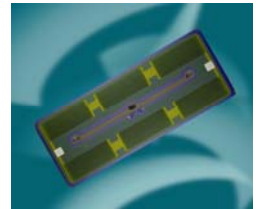
Specifications subject to change without notice

(1) other values on request

(2) other cables or terminals on request

# DATA SHEET

Power resistors (stainless steel)  
Model: PLR 900

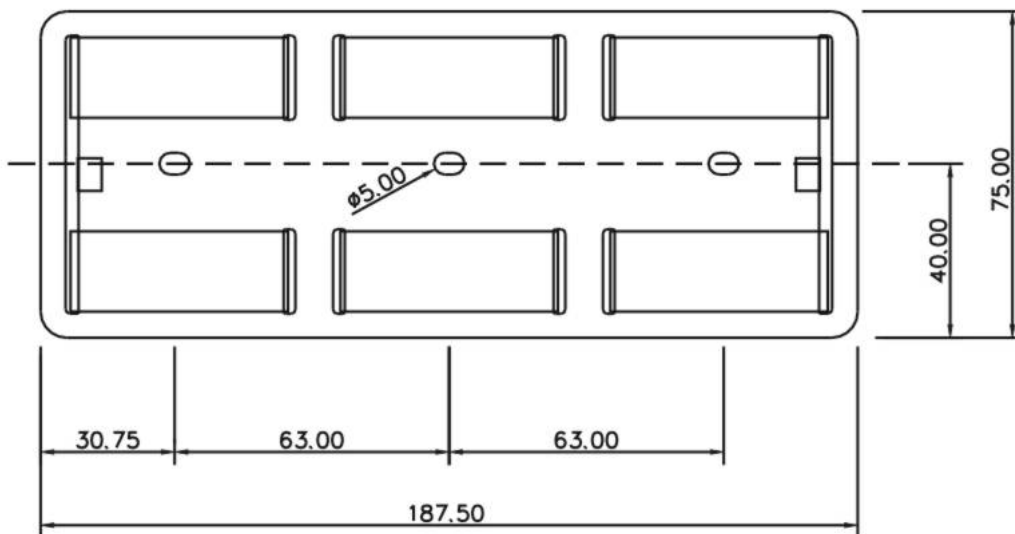


metallux.de

technology matters

## Drawing

PLR 900.188.75



Substrate thickness  $1,2 \pm 0,2$  mm

## How to order

PLR 900.188.75 100R  $\pm 10\%$

Specifications subject to change without notice  
(1) other values on request  
(2) other cables or terminals on request

Metallux AG  
Robert-Bosch-Str. 29  
D-71397 Leutenbach

Tel. +49 (0) 7195/5980-0  
Fax +49 (0) 7195/5980-300

www.metallux.de  
info@metallux.de

page 3 of 3  
Stand: 10/2011  
Copyright 2011 by Metallux