

DATA SHEET

Brake resistor Model: PWR-X



Features

- high long-term loading up to 3KW
- robust housing
- seal condition IP 20

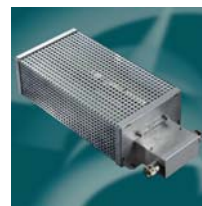
Applications

- brake resistor
- discharge resistor
- grounding resistor
- protective circuit resistor

Metallux AG

Robert-Bosch-Str. 29
D-71397 Leutenbach
Germany
Tel: +49 (0) 7195/5980-0
Fax: +49 (0) 7195/5980-300
www.metallux.de
info@metallux.de

DATA SHEET



metallux.de

technology matters

Characteristics	1TR304S	1TR307S	1TR308S	1TR309S	1TR310S	
Power (P_{nenn} [20°C]/W)	200 W	400 W	500 W	750 W	1000 W	
Resistance range	5R up to 100R	5R up to 33R	5R up to 100R	5R up to 100R	5R up to 100R	(1)
Tolerance	± 10%					
Working voltage (V)	600 V					
Test voltage (V_{eff} , 50 Hz)	1500 V					
Impulse voltage $W_{\text{ad.}} = 20 P_{\text{nenn}}$	4 KJ	8 KJ	10 KJ	15 KJ	20 KJ	(1)

Mechanical Characteristics

Load	1,3 kg	1,7 kg	1,9 kg	2,1 kg	4,2 kg	
Seal condition	IP 20					

Environmental Characteristics

Storage temperature	-10°C ... + 50°C					
Housing temperature	up to + 80°C at capacity rating					
Climatic class	55/200/56					

Material

Housing	galvanised steel					
Lead	Weidmüller-Klemme SAK 6					
Temperature switch	Microtherm R28 A80/03EN0975/7A06 switch temperature 80°C					

How to order

Type	R-Value					
PWR-1TR304S	5R					

Specifications subject to change without notice.

(1) further values on request



Characteristics	2TR307S*	2TR308S*	4TR307S*	4TR308S*	6TR308S	
Power (P_{Nenn} [20°C]/W)	800 W	1000 W	1600 W	2000 W	3000 W	
Resistance range	8R up to 68R	5R up to 100R	5R up to 85R	4R up to 100R	2,5R up to 100R	(1)
Tolerance	± 10%					
Working voltage (V)	600 V					
Test voltage (V_{eff} 50 Hz)	1500 V					
Impulse voltage $W_{\text{ad.}} = 20 P_{\text{Nenn}}$	16 KJ	20 KJ	32 KJ	40 KJ	60 KJ	(1)

Mechanical Characteristics

Load	2,4 kg	2,8 kg	4,8 kg	6,8 kg	5,2 kg
Seal condition	IP 20				

Environmental Characteristics

Storage temperature	-10°C ... + 50°C				
Housing temperature	up to + 80°C at capacity rating				
Climatic class	55/200/56				

Material

Housing	galvanised steel				
Lead	Weidmüller-Klemme SAK 6				
Temperature switch	Microtherm R28 A80/03EN0975/7A06 switch temperature 80°C				

How to order

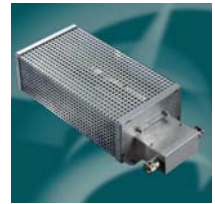
Type	R-value
PWR-4TR308S	14R

Specifications subject to change without notice.

(1) further values on request

* **preferred design**

DATA SHEET

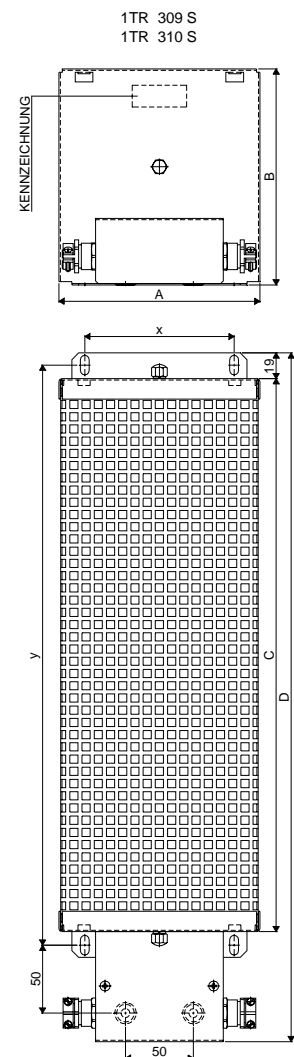
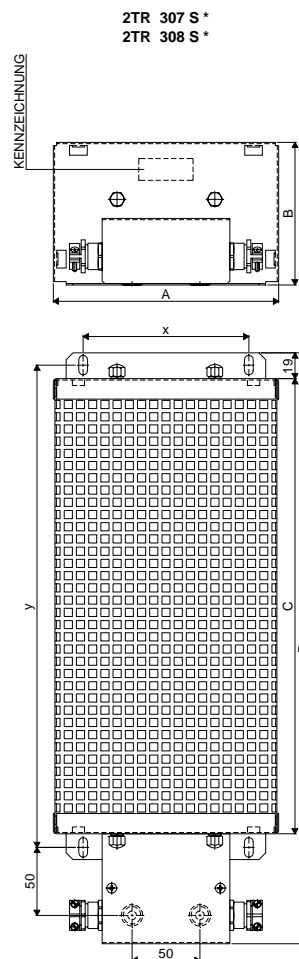
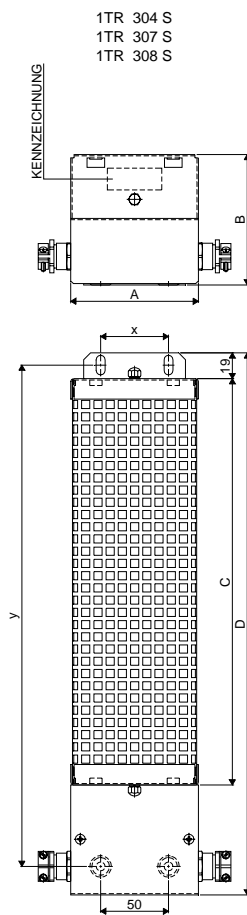


metallux.de

technology matters

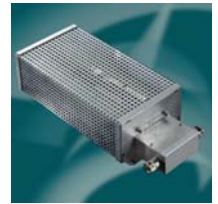
Dimensions (mm)

Type	A	B	C	D	X	Y
PWR-1TR304S	94	96	299	399	50	369
PWR-1TR307S	94	105	275	375	50	345
PWR-1TR308S	94	105	335	435	50	405
PWR-1TR309S	148	159	412	512	110	432
PWR-1TR310S	148	159	542	642	110	562
PWR-2TR307S*	166	105	275	375	122	295
PWR-2TR308S*	166	105	335	435	122	355



* preferred design

DATA SHEET



metallux.de

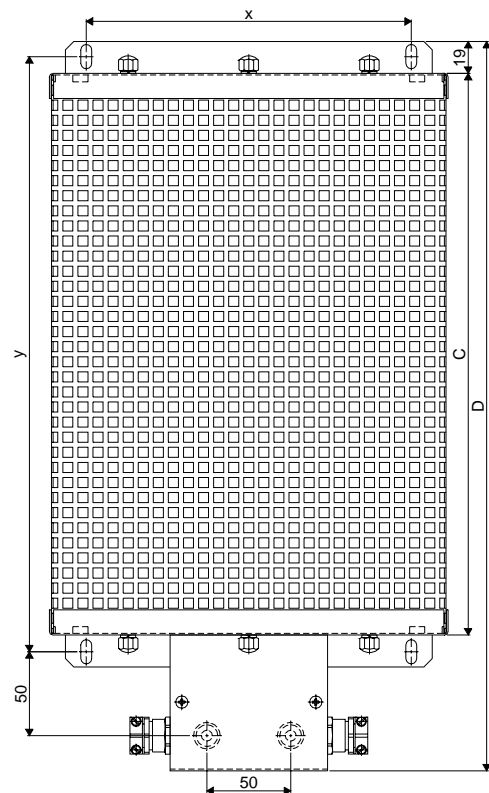
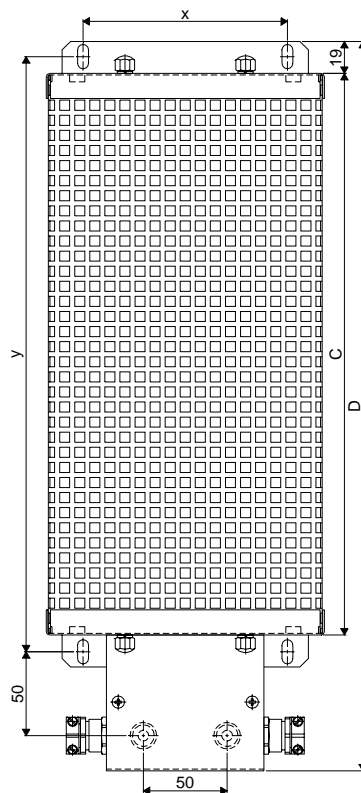
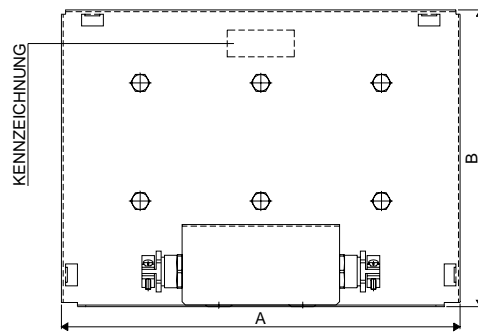
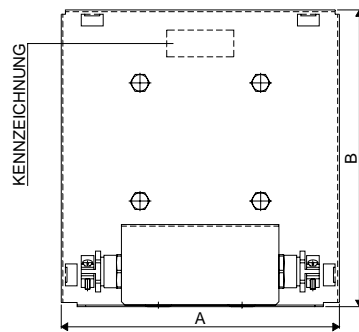
technology matters

Dimensions (mm)

Type	A	B	C	D	X	Y
PWR-4TR307S*	166	177	275	375	122	295
PWR-4TR308S*	166	177	335	435	122	355
PWR-6TR308S	238	177	335	435	194	355

4TR 307 S *
4TR 308 S *

6TR 308 S



* preferred design