

## Industrial Joystick Analog 1-, 2- and 3-axis Controller

### MJ-3K CP



#### Features

- excellent lifetime
- robust construction
- small design
- conductive plastic

#### Applications

- platform lifts
- remote controls
- forklift trucks
- hydraulic

Metallux AG  
Robert-Bosch-Str. 29  
D-71397 Leutenbach - Germany  
Tel: +49 (0) 7195/5980-0  
Fax: +49 (0) 7195/5980-300  
<http://www.metallux.de/>  
[info@metallux.de](mailto:info@metallux.de)

# Industrial Joystick Analog

## 1-, 2- and 3-axis Controller

MJ-3K CP



metallux.de

technology matters

### Electrical Characteristics

---

Resistance range/axis	10 k $\Omega$ *)
Resistance tolerance	$\pm 20$ %
Electrical angle	$> \pm 25^\circ$ *)
Independent linearity	$\pm 2$ %
Centre detect switch/axis	$< \pm 3^\circ\text{C}$ open ; $> \pm 3^\circ\text{C}$ closed
Power rating/axis	0,2 W at 40°
Operating voltage (VCC)	Max. 30 V <sub>dc</sub>
Wiper current	$< 10$ $\mu\text{A}$
Max. wiper current	1 mA in failure mode
Insulation resistance	1 G $\Omega$ at 500 V <sub>DC</sub>
Dielectric withstanding voltage	2000 V

### Mechanical Characteristics

---

Life time	2,5 Mio. cycles
Displacement angle	$< \pm 26^\circ$
Seal condition	IP65
Operating force	5 N typical *)
Coulisse	Quadratic *)
Middle position wiper	$\pm 1,5^\circ$
Impact force	100 N

### Environment characteristics

---

Storage temperature	- 40°C ... + 85°C *)
Operating temperature	- 25°C ... + 70°C *)
Climatic class	25/085/56
Vibration	10 G
Shock	50 G

### Material

---

Housing	aluminium
Bearing	stainless steel
Solder connections	gold plated
Mounting	screws M3

---

Specifications subject to change without notice

\*) Other values on request

# Industrial Joystick Analog

## 1-, 2- and 3-axis Controller

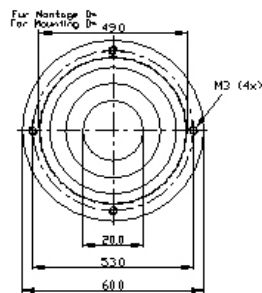
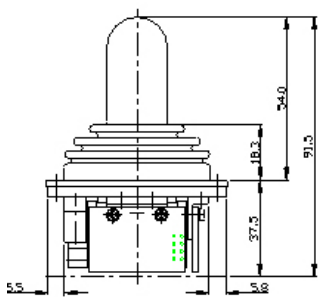
MJ-3K CP



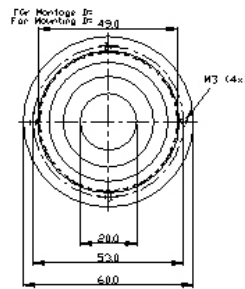
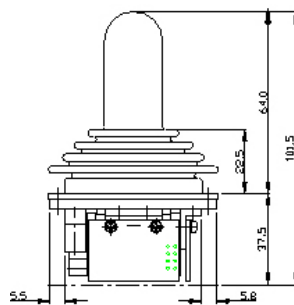
metallux.de

technology matters

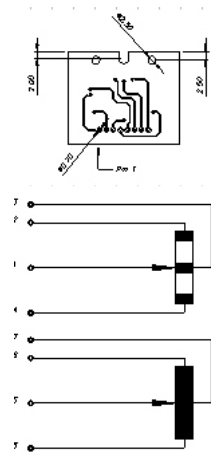
### Dimensions MJ-3K CP 54



### MJ-3K CP 64



### Pin connection



### Options (custom designed)

- Other resistance values
- Modified operating element
- Cable, connector
- Mounting plate

### How to order

Type	Shaft length	Elec. output	Options
M J - 3 K C P	5 4	X	D S
Joystick MJ-3K CP	54 cm 64 cm	X - 2K5 / 1-0-1 Y - 2K5 / 1-0-1 Z - 2K5 / 1-0-1	<b>Standard :</b> DS - Deadman switch CG - cross gate  <b>Custom design :</b> Reibbremse put 'n stay Other resistance values Redundant version Modified operating element Cable/Connector Mounting plate